

- [SI] Single Pole switch
- [ST] Three Way Switch
- [PL] 110-Outlet
- [L] 4 Tube 4 Foot Florescent
- [L] 2 Tube 4 Foot Florescent

IN Basement

- 2 - Florescent Basement Lights
- 1 - Light in Stairwell
- 1 - 220 Receptacle
- 1 - 110 Receptacle for 6 gallon water heater
- 1 - outlet for gas furnace

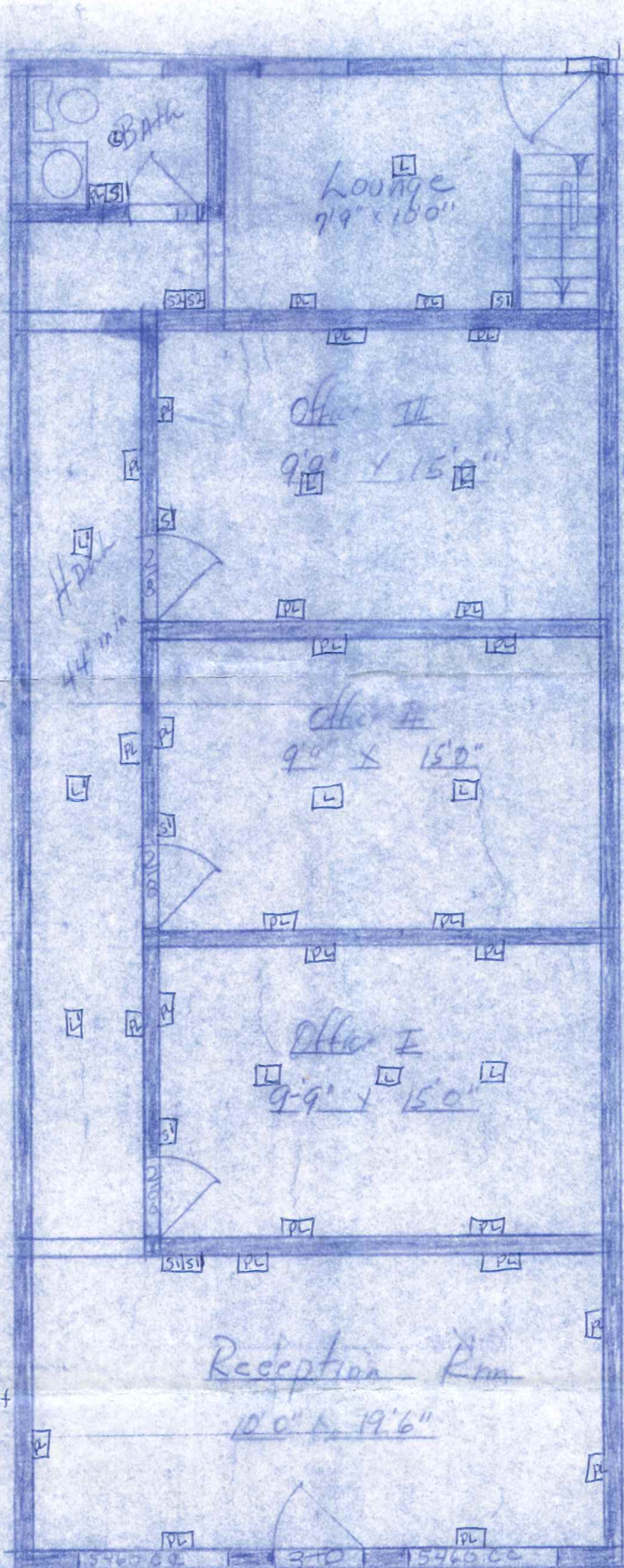
All wiring is #12 THHN Stranded Run in 1/2" EMT Conduit.

Plugs between walls are Run in 1/2" Flex Conduit.

Overhead Lights are in 1/2" Flex.

Entrance is 1 1/4" Conduit with slip fit weatherhead + 3-#2 copper. into 100 Amp GE 20 Circuit Panel

Load on Building - 50 Amps

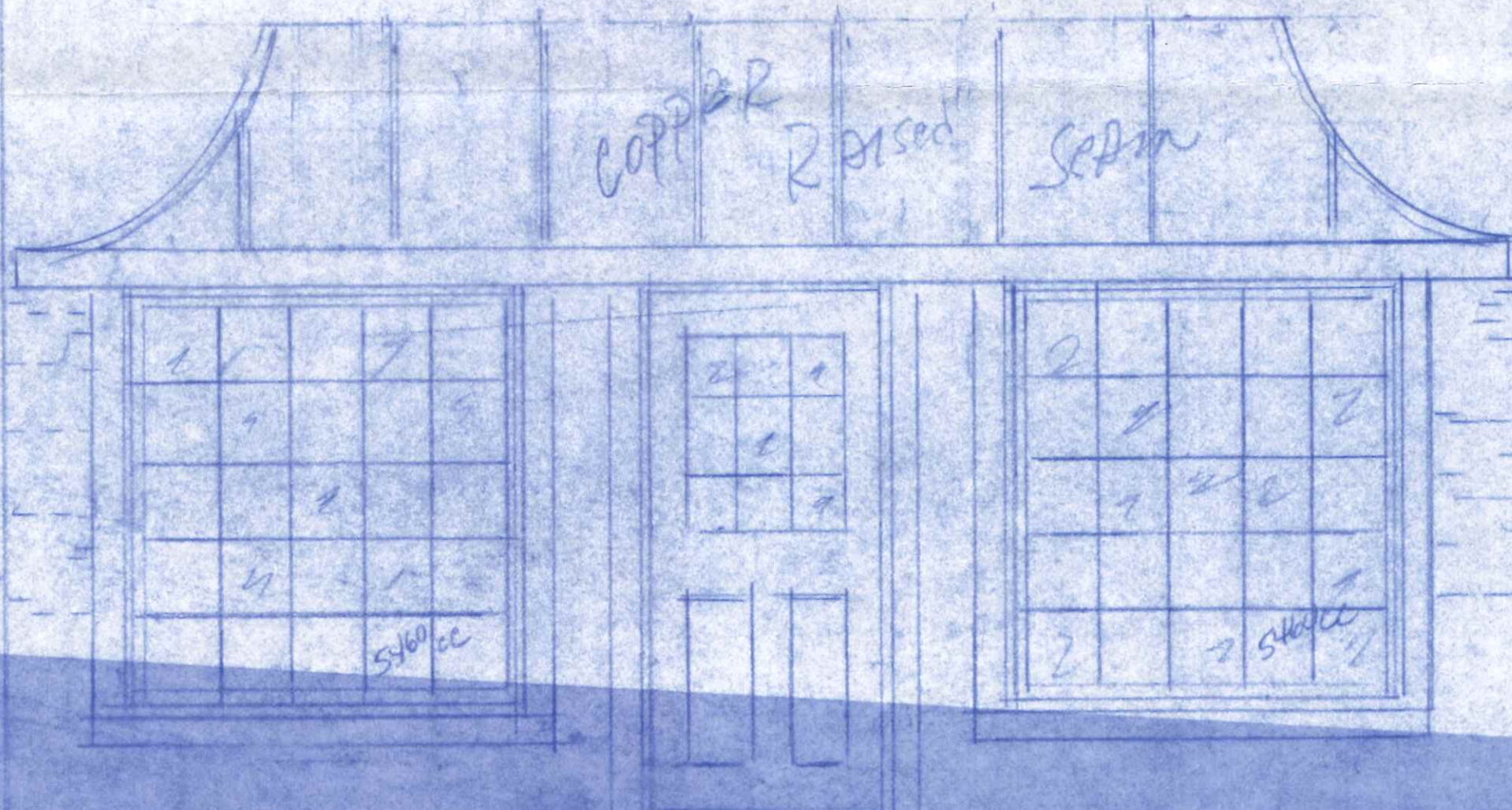


*Proposed Renovation for
Mr. Lawrence Schaub
Plant Skat II
by Ron Zwick*

940 sq ft

NATIONWIDE INS

COPPER RISED SEAM



809
N Perry
St.